

Lombric "ver de terre"



Ver de fumier



Enchytrée



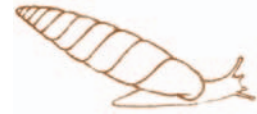
Escargot



Limace



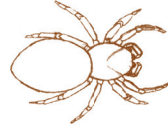
Cochlodine



Trichie ou hélice



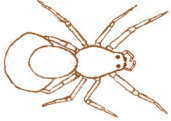
Saltique



Thomisè



Pardose



Epeire



Opilion "fauchèux"



Pseudo-scorpion



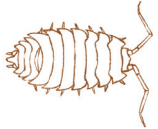
Scorpion



Acarien



Cloporte



Géophile



Lithobie



Scolopendre



Glomèris



Polydèsmè



Iule



Collembole



Thysanoure "poisson d'argent"



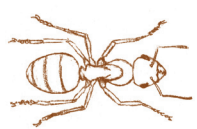
Diploure



Femelle adulte et larve de ver luisant



Fourmi



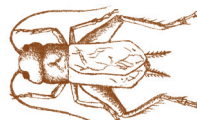
Sauterelle



Criquet



Grillon



Régimes Alimentaires

FRAPNA® 2009 - Cf p.23 carnet d'activités



Consommateurs d'animaux (Zoophage*)



Consommateurs de produits végétaux (fruits, feuilles, graines, pollen...) (Phytophage*)



Consommateurs de matière organique (végétale ou animale) en décomposition, (Détritophage*)

Courtilière



Larve de mouche



Mouche



Tipule "cousin"



Chenille de papillon



Papillon



Larve de fourmilion



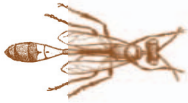
Fourmilion



Guêpe



Ammophile



Larve de cigale



Cigale



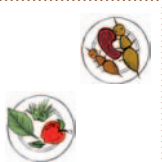
Larve de forficule



Forficule



Gendarme



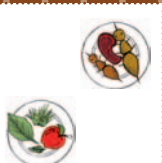
Staphylin



Nécrophore



Punaise



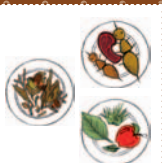
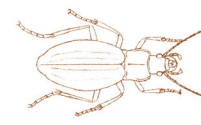
Blatte



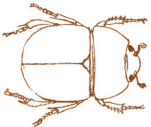
Petite biche



Carabe



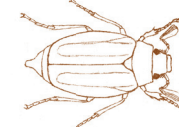
"Bousier" Géotrupe



Larve de hanneton



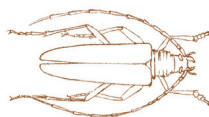
Hanneton



Larve de longicorne



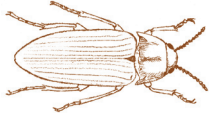
Longicorne



Larve "fil de fer" de taupin



Taupin



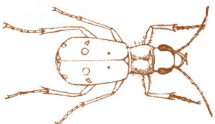
Larve de cétoine



Cétoine



Cicindèle



Charançon



Chrysomèle

